

Overview

THUM Shutdown is a utility to shutdown multiple computers based on the readings received from a locally installed THUM device.

Do you have a THUM in a server room and need to automatically shutdown multiple computers/servers in the event of a major HVAC failure? Then you need the THUM Shutdown Utility.

Today's server rooms generate a large amount of heat. In the event of an air conditioning failure, the room temperature can quickly reach temperatures of 90 F or above. Running servers at high temperatures can shorten the life of the server and damage hard drives. The THUM Shutdown Utility can automatically shutdown the servers to prevent damage due to high temperatures.

Let the THUM and THUM Shutdown Utility monitor your server room temperatures and shutdown servers if critical room temperatures/humidity occur. These tools are always watching out for the health of your servers - even nights, weekends, and holidays.

The program runs as a Windows service and will compare the temperature and humidity readings it receives from the THUM with alarm set points entered into the shutdown utility. If the readings are outside of the set points the program will start its shutdown sequence for computers in the list. It can also send an email notification when each computer has been shutdown.

The THUM Shutdown Utility is installed on the same computer the THUM is connected to. The software performs a remote administrative shutdown of other computers. The computers to be shutdown do not need to have any extra software installed.

Note: If shutting down computers with operating systems with UAC(User Access Control), UAC must be disabled on those computers. When UAC is enabled, it prevents remote shutdown of the computer. OSs with UAC include: Vista, Windows 7 and 2008 Server

Copyright © 2010 Practical Design Group, LLC, All rights reserved.

Installation

System Requirements:

Pentium 1 GHz computer or faster

256 MB RAM or greater

THUM(Temperature Humidity USB Monitor)

Windows 2000, Windows XP, Vista, Windows 7, Windows 2003 server, 2008 server 32 & 64 bit

SMTP server to send emails. Exchange is Not required

Run Setup.exe as an Administrator and follow the prompts on the computer that will be running the reports. On Vista or newer, you need the run the Setup will elevated privileges for proper install.

After the installation is complete, run THUM Shutdown Util Settings and configure the application.

Copyright © 2010 Practical Design Group, LLC, All rights reserved.

Troubleshooting

UAC - If shutting down computers with operating systems with UAC(User Access Control), UAC must be disabled on those computers. When UAC is enabled, it prevents remote shutdown of the computer. OSs with UAC include: Vista, Windows 7 and 2008 Server

Both the THUM service and Shutdown service must be running in order for the shutdown process to take place. This can be verified by clicking on the Other tab.

Verify that the Shutdown All computer Status is set to Enabled. When disabled none of the computers entered will be shutdown upon an alarm failure. This setting is toggled by clicking on the "Enable/Disable Shutdown for all Computers" button.

Most problems occur because of an incorrect username, password, or server name. Please verify everything is entered correctly.

Make sure your internal mail server is set to allow anonymous relay from the IP address of the computer running THUM Shutdown Utility. Often the mail relay option may be disabled.

Many Antivirus software have "Intrusion Detection" and "Anti Mailworm" detection, which may block SMTP traffic and prevent sending of email reminders. Add thumsvc.exe, shutdown.util.settings.exe, and shutdown.service.exe to the antivirus "exclusion" list to avoid the email blocking issue.

Relaying messages through external spam gateways can prevent the email reminders from reaching your users.

Port(25)SMTP or Port(443) SSL SMTP must be open on the network.

Log file: There are two log files in the application folder that contains all tasks the program performs. These files can help find possible problems.

Shutting down computers
Support can be obtained by emailing
support@practicaldesign.com

Copyright © 2010 Practical Design Group, LLC, All rights reserved.

System Config

On this tab is where the computers that will be shutdown will be entered. Technically there is not a limit to the number of computers that can be added to the list. Each computer on the list needs to have a username and password entered that has administrative rights on the computer. This user can be a domain admin or a local admin.

Domain - If the user with admin rights is a domain user, enter the domain here. If it is a local user, leave the field blank.

Computer - Enter the DNS name or IP of the computer to be shutdown.

Username/Password - Enter username and password of the user with admin rights to shutdown the computer. Each computer on the list needs to have a username and password entered that has administrative rights on the computer. This user can be a domain admin or a local admin.

Low Temp - Enter the low temperature that will generate an alarm and start the shutdown process for this computer.

High Temp - Enter the high temperature that will generate an alarm and start the shutdown process for this computer.

Note: All temperatures entered on this tab do not have an associated temperature unit of F or C. The program just does a straight numeric comparison to the readings take by the THUM. Verify what temperature unit the THUM software is using to take readings. Example: If the THUM software is using F, then enter temperature values into THUM Shutdown Utility in F.

Low RH - Enter the low RH that will generate an alarm and start the shutdown process for this computer.

High RH - Enter the high RH that will generate an alarm and start the shutdown process for this computer.

Enable - You can disable the alarm check and shutdown for individual computers by unchecking this box.

Test Connection - Click on this button to verify the computer name, username, password, and domain are correct and have sufficient priviledges to shutdown the computer.

Delete - Deletes that row of configuration data

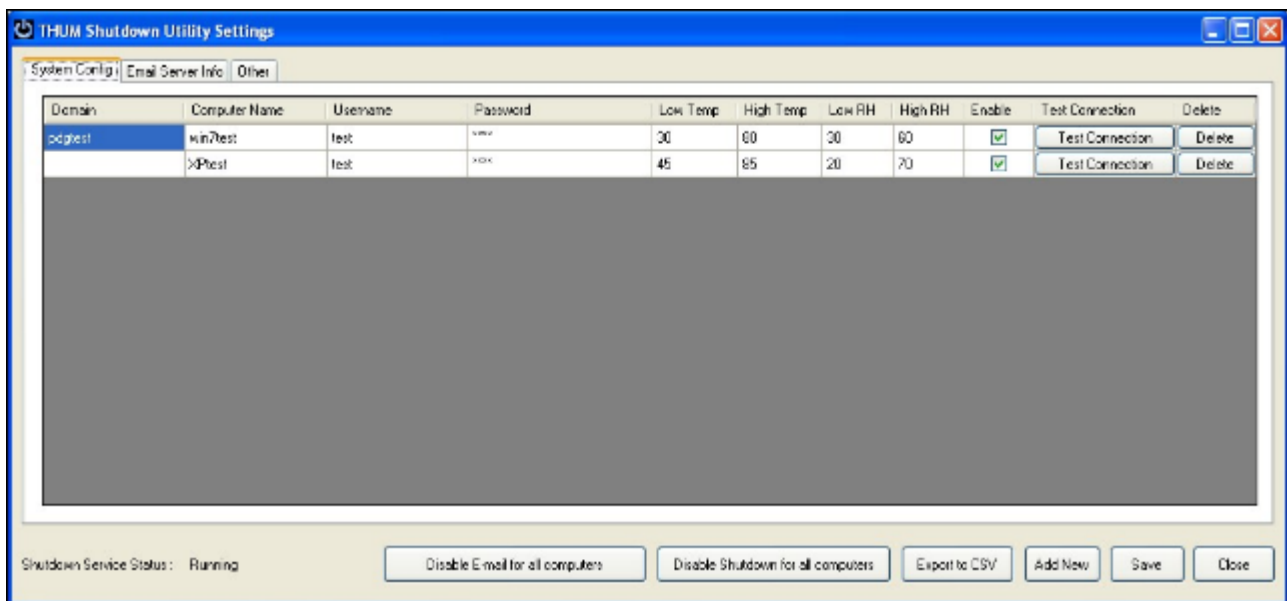
Disable/Enable Email for all Computers - This button toggles the program's setting to send notification emails when computers are shutdown.

Enable/Disable Shutdown for All Computers - This button toggles the program's setting to enable/disable the shutdown of all computers listed. When disabled none of the computers entered will be shutdown upon an alarm failure.

Export CSV - Exports the list of computers and alarms limits to a comma seperated file.

Add New - Adds a new row to the table for adding another computer to be shutdown.

Save - Save all settings to the config.xml file. Once the settings are saved the Shutdown Service will automatically start using the new settings, the Shutdown Service does Not need to be restarted.



Copyright © 2010 Practical Design Group, LLC, All rights reserved.

Email Server Info

THUM Shutdown Utility will connect to any SMTP mail server, including servers that require SSL authentication. Microsoft Exchange is not required.

SMTP Server - Enter the DNS name or ip of your mail server

Username and Password - Enter the username and password of the email account

Port - Enter the port that the server is using for SMTP. Port(25)SMTP or Port(443) SSL SMTP

From Email - Email address that will be used as the from address

To Email - Email addresses that notifications email will be sent to. Multiple email addresses can be entered by seperating each address with a comma.

Authenticaiton - If your email server requires authentication, put a check mark in front in the box.

Format - If you write the templates in HTML then select HTML.

Test - To send a test email, click this button.

Save - Be sure to click Save to save the settings to the config.xml file.

The screenshot shows the 'THUM Shutdown Utility Settings' window with the 'Email Server Info' tab selected. The window contains a table with the following data:

SMTP Server	Username	Password	Port	From E-Mail	To E-Mail	Authentication	Format	Test
mail.server.com	thum	password	25	thum@server.com	alex@server.com	<input checked="" type="checkbox"/>	Text	<input type="button" value="Test E-Mail"/>

Below the table is a large empty text area for additional email addresses. At the bottom of the window, the 'Shutdown Service Status' is 'Running', and there are 'Save' and 'Close' buttons.

Copyright © 2010 Practical Design Group, LLC, All rights reserved.

Other

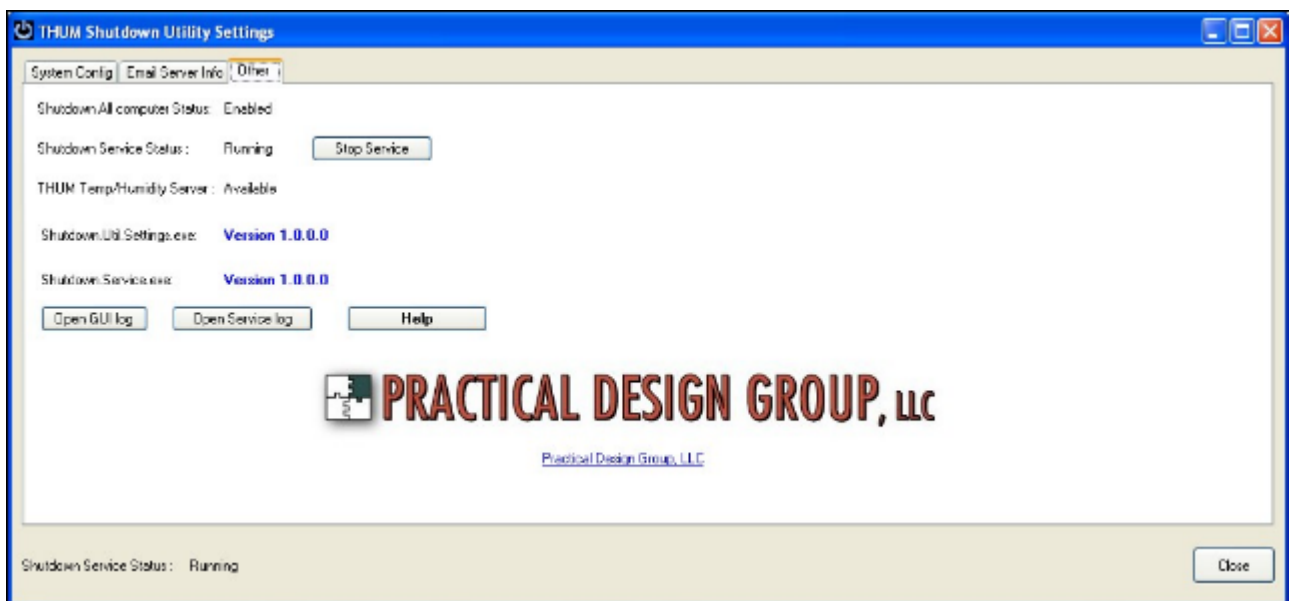
Shutdown All computer Status - When disabled none of the computers entered will be shutdown upon an alarm failure. This setting is toggled by clicking on the "Enable/Disable Shutdown for all Computers" button.

Shutdown Server Status - Displays the current state of the ShutdownService. The Shutdown Service can be Stop and Started using the Service button.

THUM Temp/Humidity Server - Displays if the THUM service is available to send the current temp/rh data.

Open GUI Log - Opens the log file generated by the Shutdown.util.settings.exe program.

Open Service log - Opens the log file generated by the Shutdown Service program.



Copyright © 2010 Practical Design Group, LLC, All rights reserved.

Legal Disclaimer

Please read the following terms and conditions carefully before using this SOFTWARE PRODUCT. Your use, distribution or installation of this copy of "THUM Shutdown Utility" indicates your acceptance of this License.

SOFTWARE PRODUCT here means Software, image files, all accompanying files, data and materials received with your order of "THUM Shutdown Utility".

If you do not agree to any of the terms of this License, then do not install, distribute or use the SOFTWARE PRODUCT.

Warranty covers defects in the software, which prevents successfully installing the software in the buyer's PC. Warranty does not cover fitness of purpose, not meeting of expectations or needs in the mind of the buyer.

This SOFTWARE PRODUCT may be installed and used by on only one computer. Its component parts may not be separated for use on more than one computer. All components accompanying the software are copyrighted by Practical Design Group, LLC and may not be taken apart, modified, used or published with other software or means except with the SOFTWARE PRODUCT software and may not be distributed or copied in any manner.

This SOFTWARE PRODUCT, all accompanying files, data and materials, are distributed "AS IS" and with no warranties of any kind, whether express or implied. The user must assume all risk of using the program. This disclaimer of warranty constitutes an essential part of the agreement.

Any liability of Practical Design Group, LLC will be limited exclusively to refund of purchase price. In addition, in no event shall Practical Design Group, LLC, or its principals, shareholders, officers, employees, affiliates, contractors, subsidiaries, or parent organizations, be liable for any incidental, consequential, punitive or any other damages whatsoever relating to the use of SOFTWARE PRODUCT.

In addition, in no event does Practical Design Group, LLC authorize you to use this SOFTWARE PRODUCT in applications or systems where SOFTWARE PRODUCT 's failure to perform can reasonably be expected to result in a physical injury, or in loss of life. Any such use by you is entirely at your own risk, and you agree to hold Practical Design Group, LLC harmless from any claims or losses relating to such unauthorized use.

This Agreement constitutes the entire statement of the Agreement between the parties on the subject matter, and merges and supersedes all other or prior understandings, purchase orders, agreements and arrangements. This Agreement shall be governed by the laws of South Dakota, USA.

Practical Design Group, LLC the owner of the copyright of this SOFTWARE PRODUCT, all of its derivatives, title and accompanying materials are the exclusive property of Practical Design Group, LLC. All rights of any kind, which are not expressly granted in this License, are entirely and exclusively reserved to and by Practical Design Group, LLC. You may not rent, lease, transfer, modify, translate, reverse engineer, de-compile, disassemble or create derivative works based on this SOFTWARE PRODUCT. You may not make access to SOFTWARE PRODUCT available to others in connection with a service bureau, application service provider, or similar business, or use this SOFTWARE PRODUCT in a business to provide file compression, decompression, or conversion services to others. There are no third party beneficiaries of any promises, obligations or representations made by Practical Design Group, LLC herein.

You may not disclose to other persons the data or techniques relating to this SOFTWARE PRODUCT that you know or should know that it is a trade secret of the Practical Design Group, LLC in any manner that will cause damage to Practical Design Group, LLC.

This SOFTWARE PRODUCT and all services provided may be used for lawful purposes only. Transmission, storage, or presentation of any information, data or material in violation of any United States, South Dakota law is strictly prohibited. This includes, but is not limited to: copyrighted material, material

we judge to be threatening or obscene, or material protected by trade secret and other statute. You agree to indemnify and hold Practical Design Group, LLC harmless from any claims resulting from the use of this SOFTWARE PRODUCT, which may damage any other party.

Copyright © 2010 Practical Design Group, LLC, All rights reserved.